

SCHEDULE 13

PROPORTIONS AND FORM OF LETTERS, NUMERALS AND OTHER CHARACTERS

PART I

PROPORTIONS AND FORM OF LETTERS,  
NUMERALS AND OTHER CHARACTERS

SCHEDULE 13 PART I

Regulations 13(1), 13(5), 13(8)

PROPORTIONS AND FORM OF LETTERS, NUMERALS AND OTHER CHARACTERS

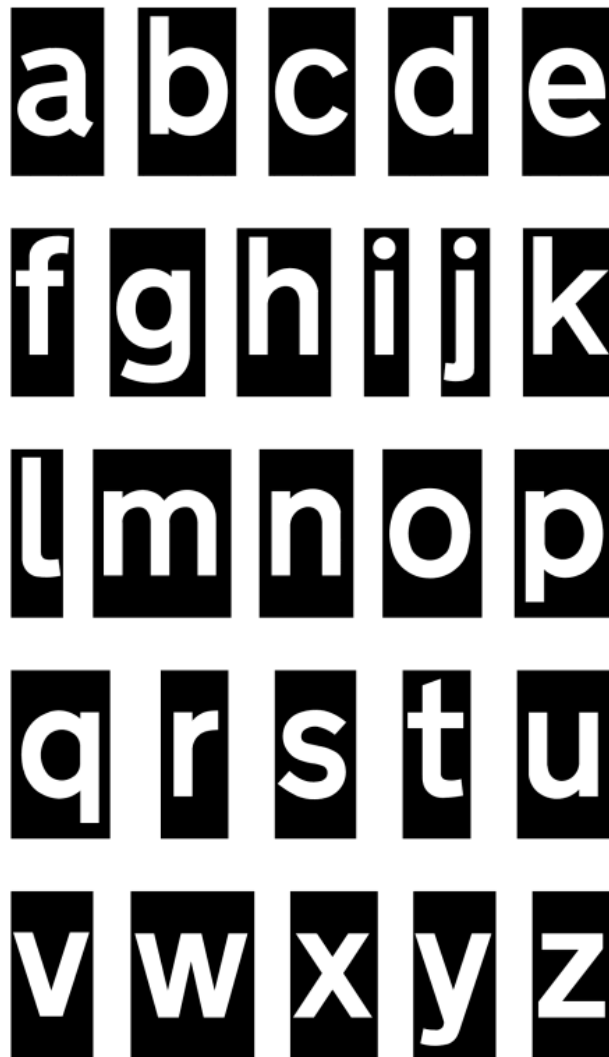
(for use on a sign or parts of a sign with a red, blue, brown, black or green background and on the signs shown in diagrams 2714 and 2715 where the characters in those diagrams are not varied to black)



**Status:** This is the original version (as it was originally made). This item of legislation is currently only available in its original format.

SCHEDULE 13 PART I PROPORTIONS AND FORM OF LETTERS, NUMERALS  
AND OTHER CHARACTERS (contd.)

(for use on a sign or parts of a sign with a red, blue, brown, black or green background and on the signs shown in diagrams 2714 and 2715 where the characters in those diagrams are not varied to black)



**Status:** This is the original version (as it was originally made). This item of legislation is currently only available in its original format.

SCHEDULE 13 PART I PROPORTIONS AND FORM OF LETTERS, NUMERALS  
AND OTHER CHARACTERS (contd.)

(for use on a sign or parts of a sign with a red, blue, brown, black or green background and on the signs shown in diagrams 2714 and 2715 where the characters in those diagrams are not varied to black)

1 2 3 4

5 6 7 8

9 0

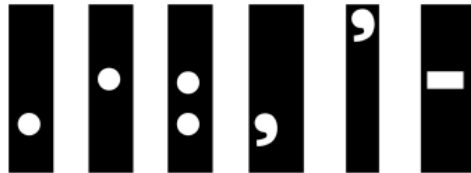
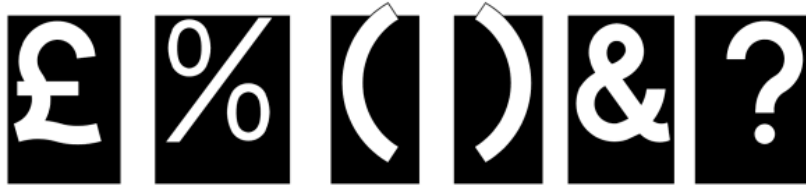
<sup>1</sup>/<sub>4</sub> <sup>1</sup>/<sub>2</sub> <sup>3</sup>/<sub>4</sub>

<sup>1</sup>/<sub>3</sub> <sup>2</sup>/<sub>3</sub>

**Status:** This is the original version (as it was originally made). This item of legislation is currently only available in its original format.

SCHEDULE 13 PART I PROPORTIONS AND FORM OF LETTERS, NUMERALS AND OTHER CHARACTERS (contd.)

(for use on a sign or parts of a sign with a red, blue, brown, black or green background and on the signs shown in diagrams 2714 and 2715 where the characters in those diagrams are not varied to black)



**Status:** This is the original version (as it was originally made). This item of legislation is currently only available in its original format.

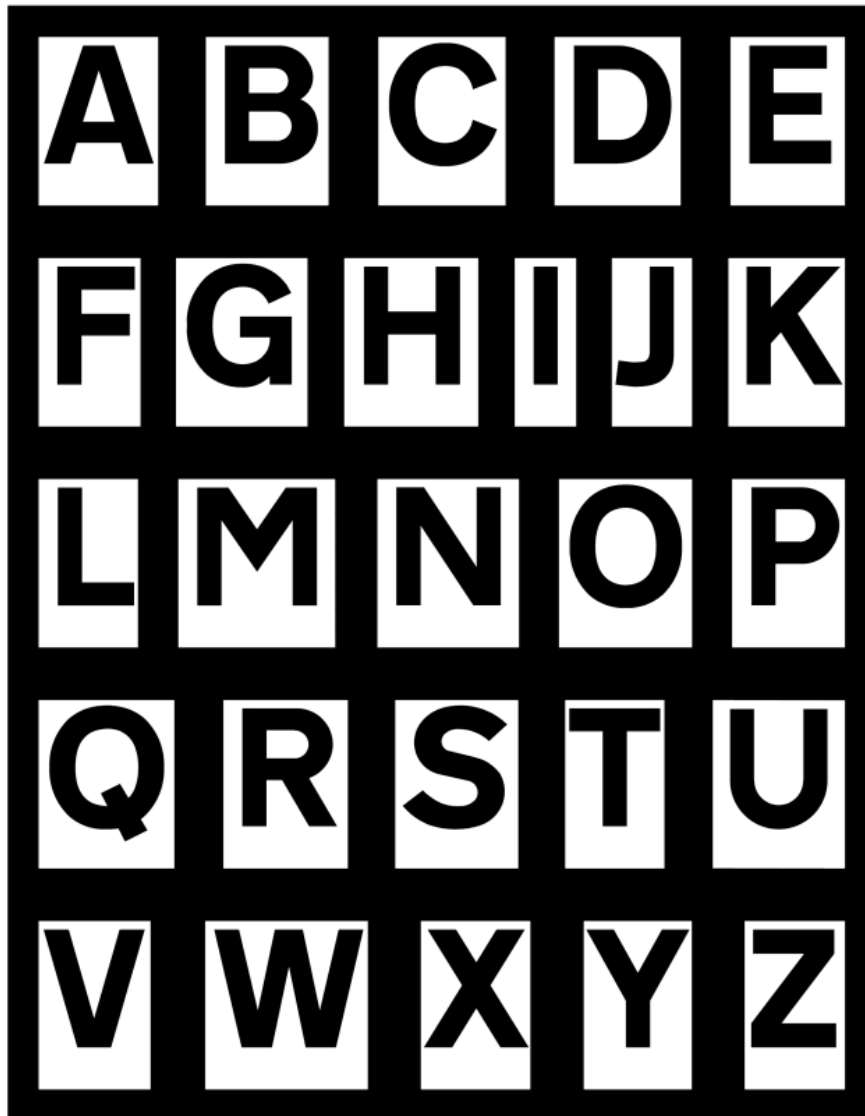
**PART II**  
**PROPORTIONS AND FORM OF LETTERS,  
NUMERALS AND OTHER CHARACTERS**

SCHEDULE 13 PART II

Regulations 13(3), 13(8)

PROPORTIONS AND FORM OF LETTERS, NUMERALS AND OTHER CHARACTERS

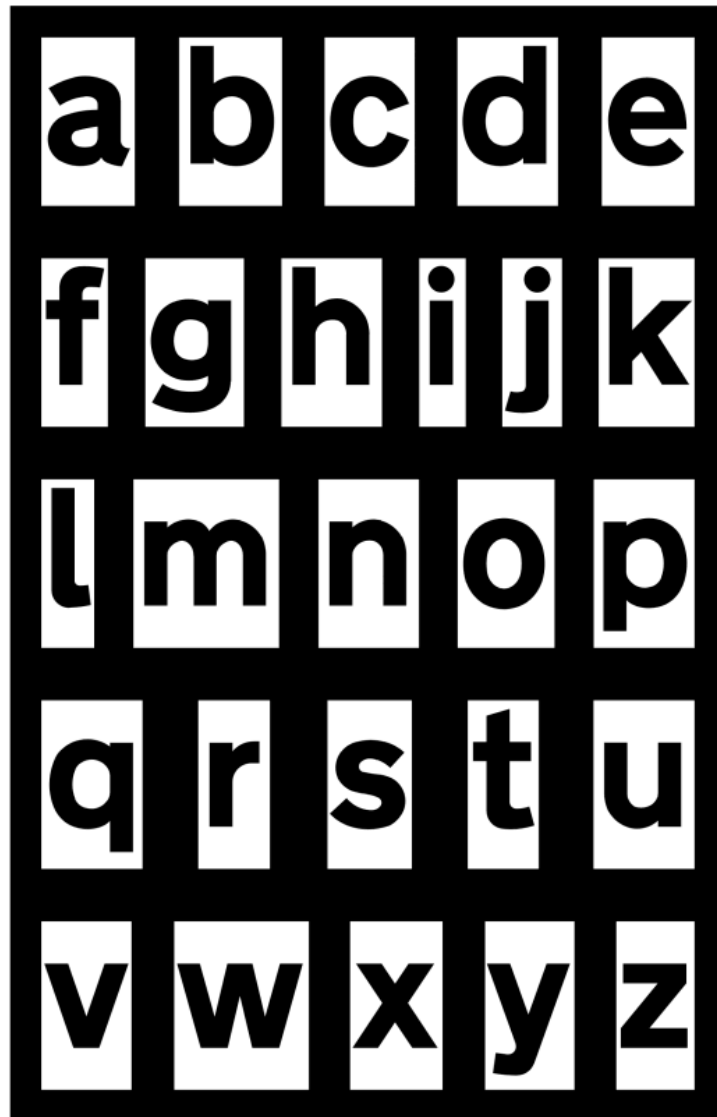
(for use on a sign or parts of a sign with a white, yellow, or orange background other than the signs shown in diagrams 2714 and 2715 except where the characters in those diagrams are varied to black)



**Status:** This is the original version (as it was originally made). This item of legislation is currently only available in its original format.

SCHEDULE 13 PART II PROPORTIONS AND FORM OF LETTERS, NUMERALS AND OTHER CHARACTERS (contd.)

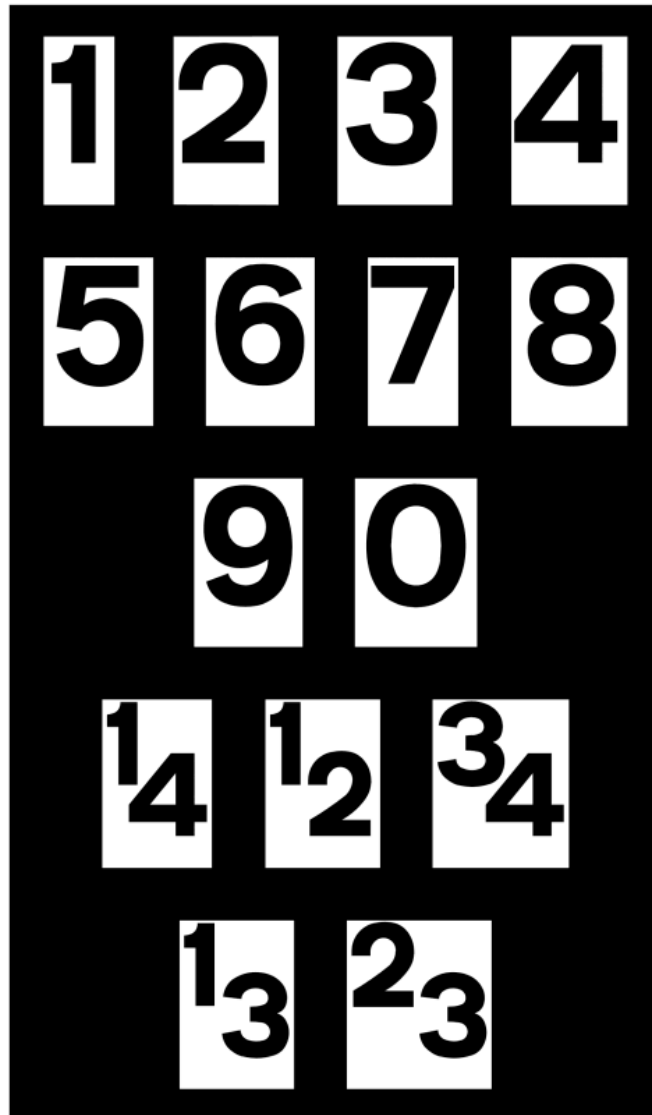
(for use on a sign or parts of a sign with a white, yellow, or orange background other than the signs shown in diagrams 2714 and 2715 except where the characters in those diagrams are varied to black)



**Status:** This is the original version (as it was originally made). This item of legislation is currently only available in its original format.

SCHEDULE 13 PART II PROPORTIONS AND FORM OF LETTERS, NUMERALS AND OTHER CHARACTERS (contd.)

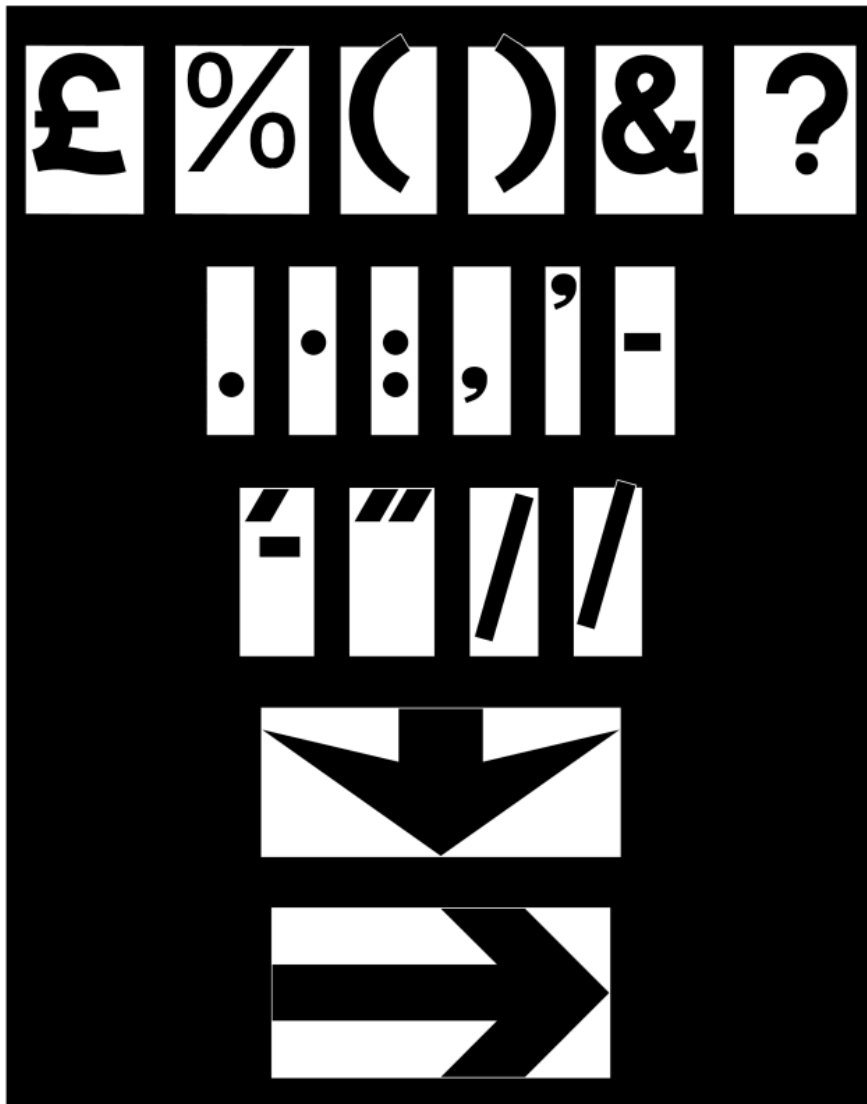
(for use on a sign or parts of a sign with a white, yellow, or orange background other than the signs shown in diagrams 2714 and 2715 except where the characters in those diagrams are varied to black)



**Status:** This is the original version (as it was originally made). This item of legislation is currently only available in its original format.

SCHEDULE 13 PART II PROPORTIONS AND FORM OF LETTERS, NUMERALS AND OTHER CHARACTERS (contd.)

(for use on a sign or parts of a sign with a white, yellow, or orange background other than the signs shown in diagrams 2714 and 2715 except where the characters in those diagrams are varied to black)

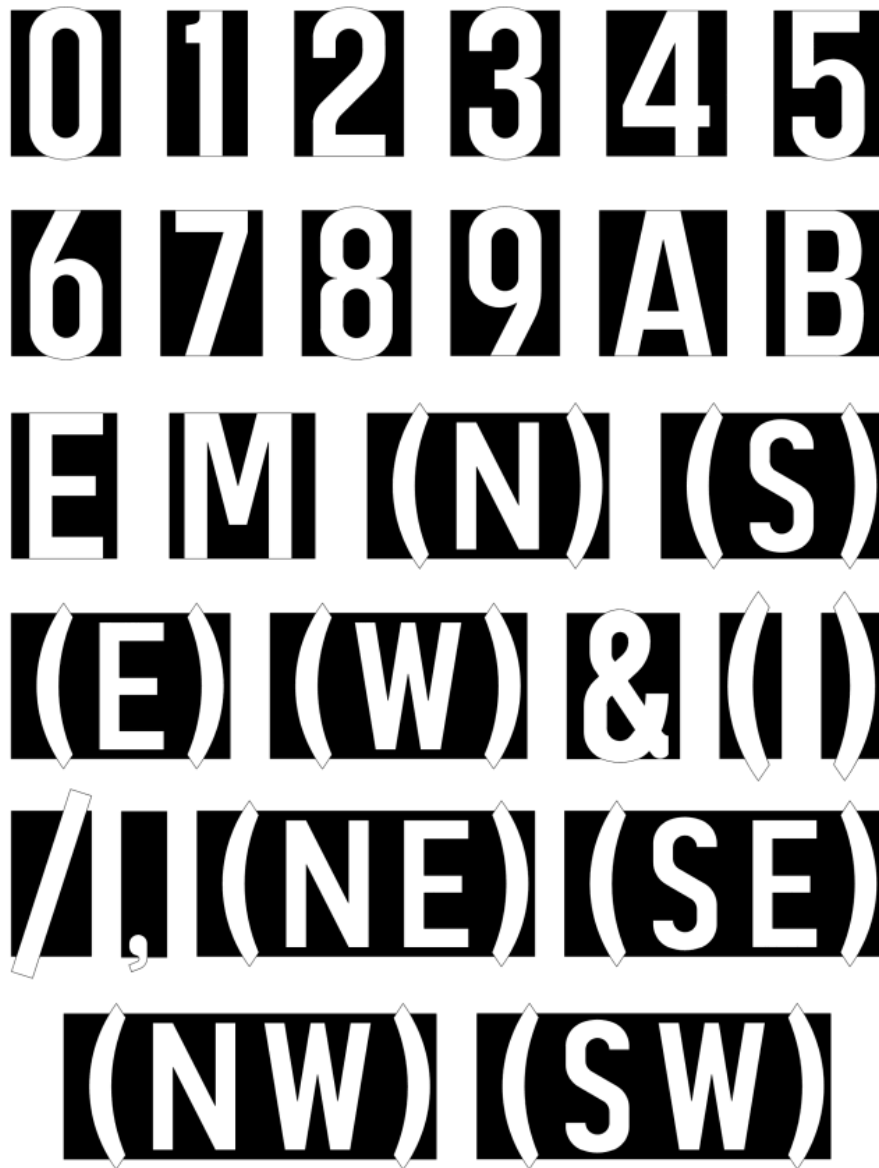




*Status:* This is the original version (as it was originally made). This item of legislation is currently only available in its original format.

PART III  
PROPORTIONS AND FORM OF LETTERS,  
NUMERALS AND OTHER CHARACTERS

SCHEDULE 13 PART III Regulation 13(5)  
PROPORTIONS AND FORM OF LETTERS, NUMERALS AND OTHER CHARACTERS  
(for route numbers on permanent motorway signs with blue backgrounds)



*Status: This is the original version (as it was originally made). This item of legislation is currently only available in its original format.*

## PART IV

### PROPORTIONS AND FORM OF LETTERS, NUMERALS AND OTHER CHARACTERS

SCHEDULE 13 PART IV

Regulation 13(6)

PROPORTIONS AND FORM OF LETTERS, NUMERALS AND OTHER CHARACTERS  
(for route numbers on temporary motorway signs with yellow backgrounds)



**Status:** This is the original version (as it was originally made). This item of legislation is currently only available in its original format.

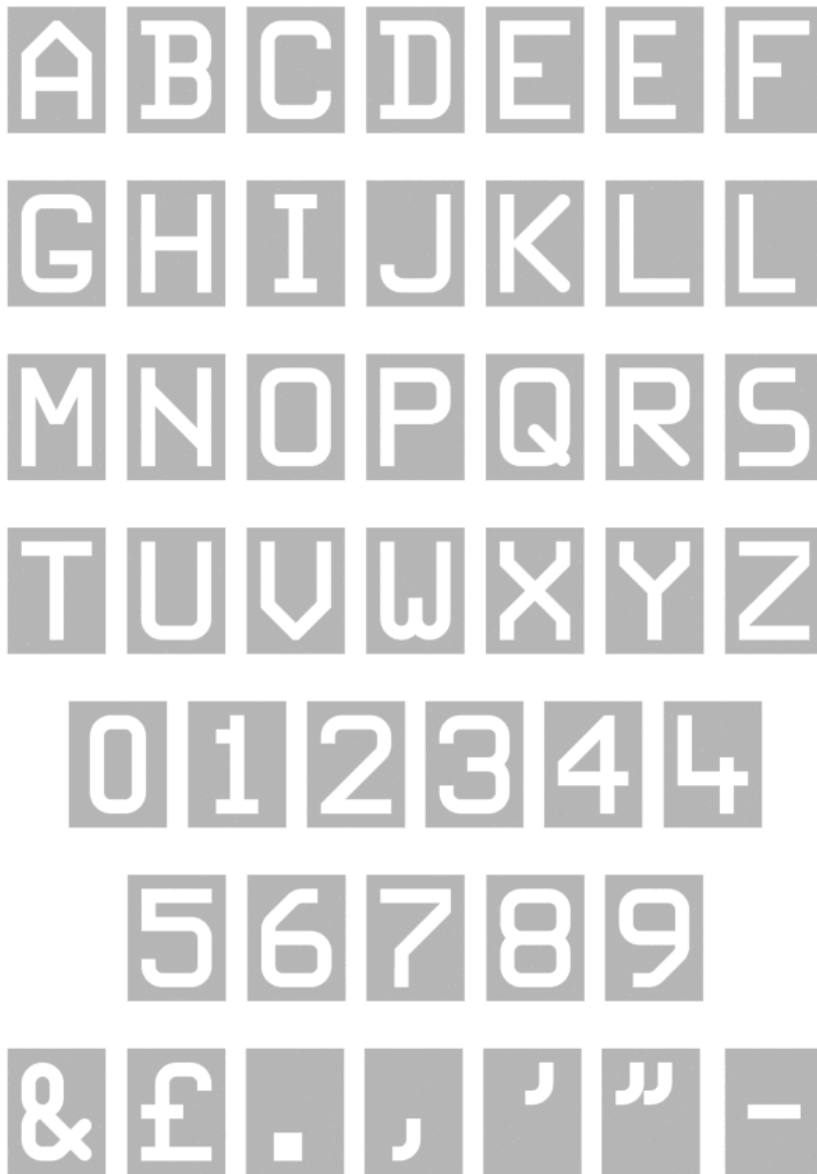
## PART V

### PROPORTIONS AND FORM OF LETTERS, NUMERALS AND OTHER CHARACTERS FOR USE ON VARIABLE MESSAGE SIGNS

#### SCHEDULE 13 PART V

Regulation 13(9)

PROPORTIONS AND FORM OF LETTERS, NUMERALS AND OTHER CHARACTERS FOR USE ON VARIABLE MESSAGE SIGNS  
(where the characters shown in Parts I, II, III and IV cannot be used because of the method of construction or operation of the sign)



**Status:** This is the original version (as it was originally made). This item of legislation is currently only available in its original format.

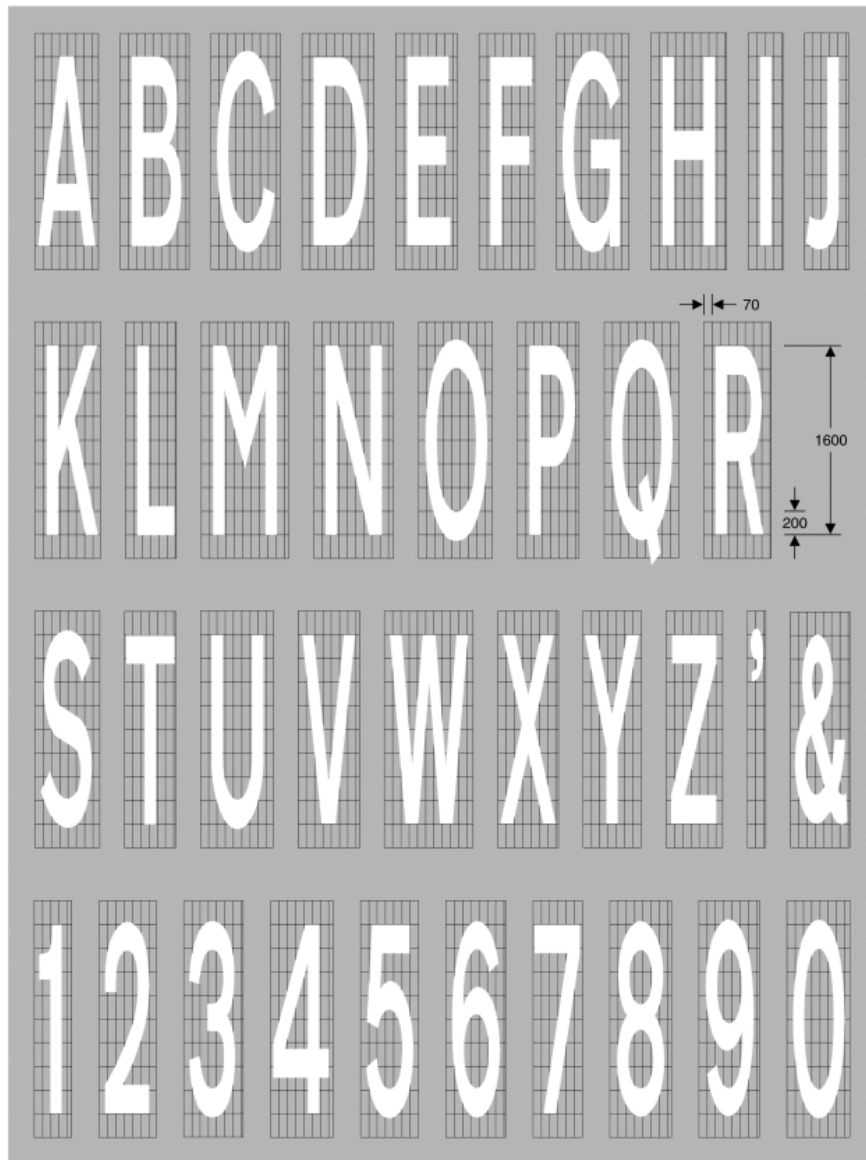
## PART VI

### PROPORTIONS AND FORM OF LETTERS, NUMERALS AND OTHER CHARACTERS FOR USE IN THE ROAD MARKINGS SHOWN IN SCHEDULE 6

#### SCHEDULE 13 PART VI

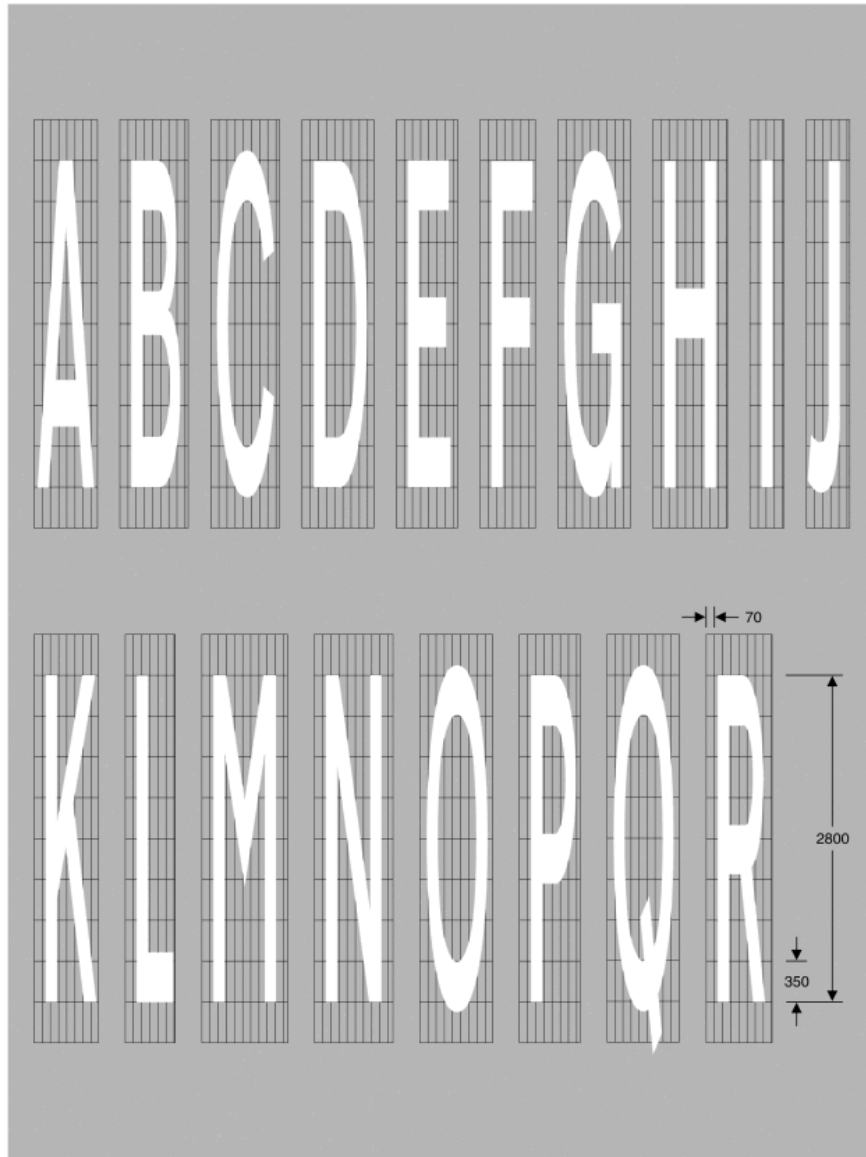
Regulation 13(10)

PROPORTIONS AND FORM OF LETTERS, NUMERALS AND OTHER CHARACTERS FOR USE IN THE ROAD MARKINGS SHOWN IN SCHEDULE 6  
(a) with a height of 1.6 metres (the characters shall be varied proportionally to a height of 1.035 metres or 0.705 metres when used to form the words of those heights shown in diagrams 1058 and 1058.1)



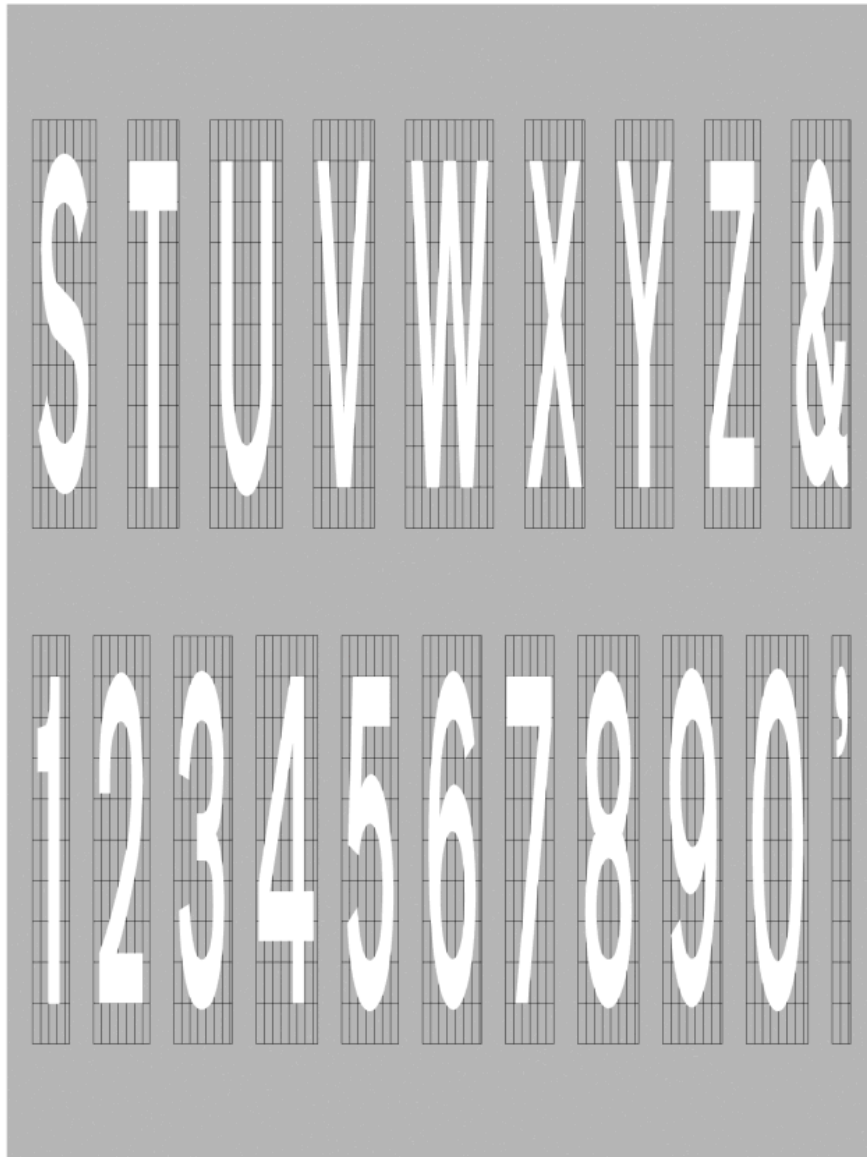
**Status:** This is the original version (as it was originally made). This item of legislation is currently only available in its original format.

SCHEDULE 13 PART VI Regulation 13(10)  
PROPORTIONS AND FORM OF LETTERS, NUMERALS AND OTHER CHARACTERS FOR USE IN THE ROAD MARKINGS SHOWN IN SCHEDULE 6  
(b) with a height of 2.8 metres



**Status:** This is the original version (as it was originally made). This item of legislation is currently only available in its original format.

SCHEDULE 13 PART VI PROPORTIONS AND FORM OF LETTERS, NUMERALS AND OTHER CHARACTERS FOR USE IN THE ROAD MARKINGS SHOWN IN SCHEDULE 6 (contd.)  
(b) with a height of 2.8 metres

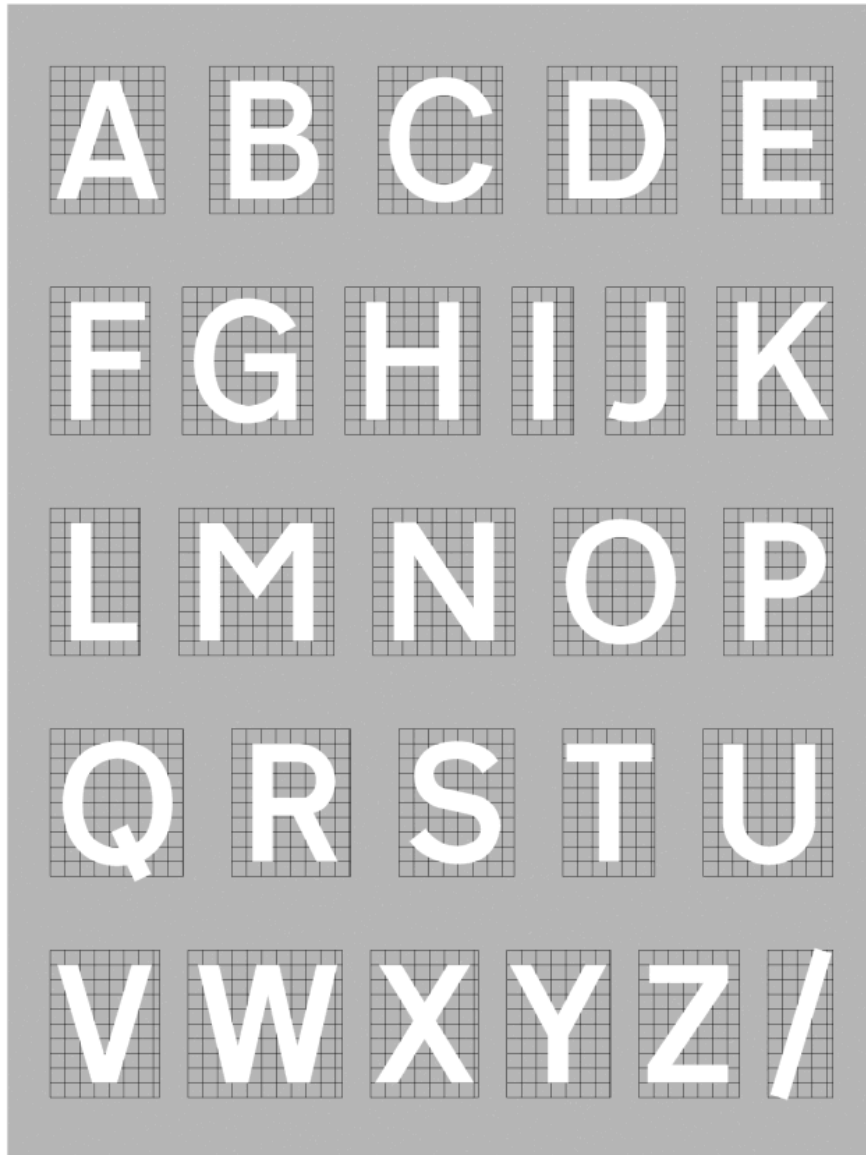


**Status:** This is the original version (as it was originally made). This item of legislation is currently only available in its original format.

SCHEDULE 13 PART VI

Regulation 13(10)

PROPORTIONS AND FORM OF LETTERS, NUMERALS AND OTHER CHARACTERS FOR USE IN THE ROAD MARKINGS SHOWN IN SCHEDULE 6  
(c) for use in the road markings shown in diagrams 1027.1, 1028.2, 1028.3, 1028.4, 1029, 1032 and 1033



**Status:** This is the original version (as it was originally made). This item of legislation is currently only available in its original format.

## PART VII

### PROPORTIONS AND FORM OF LETTERS, NUMERALS AND OTHER CHARACTERS

SCHEDULE 13 PART VII Regulation 13(11)  
PROPORTIONS AND FORM OF LETTERS, NUMERALS AND OTHER CHARACTERS  
(Symbols for use on directional signs to indicate diversion routes)

