

**2008 No. 3298**

**HIGHWAYS, ENGLAND**

**The Kent County Council (Milton Creek Bridge) (No. 2)  
Scheme 2007 Confirmation Instrument 2008**

*Made - - - - - 23rd December 2008*

*Coming into force in accordance with article 1*

The Secretary of State for Transport makes this Instrument in exercise of powers conferred by section 106(3) of the Highways Act 1980(a) and now vested in him(b):

1. This Instrument may be cited as “The Kent County Council (Milton Creek Bridge) (No.2) Scheme 2007 Confirmation Instrument 2008” and shall come into force on the date on which notice that it has been confirmed is first published in accordance with paragraph 1 of Schedule 2 to the Highways Act 1980.

2. The Kent County Council (Milton Creek Bridge) (No.2) Scheme 2007 (“the Scheme”) is hereby confirmed without modifications.

3. The Scheme as confirmed is set out in the Schedule hereto (including the plans) and copies of the Scheme with its accompanying plans are deposited at the offices of the Department for Transport, Floor 13 (IMD), Ashdown House, St Leonards on Sea, Hastings, East Sussex, TN37 7GA, and at the offices of Kent County Council at Sessions House, County Hall, Maidstone, Kent ME14 1XQ.

Signed by authority of the Secretary of State for Transport,

23rd December 2008

*J Blackie*  
Regional Director  
Government Office for the North East

---

(a) 1980 c.66.  
(b) S.I. 1981/238

## THE SCHEDULE

### **The Kent County Council (Milton Creek Bridge) (No.2) Scheme 2007**

The Kent County Council (hereinafter referred to as “the Council”) make this Scheme in exercise of their powers under section 106(3) of the Highways Act 1980 and of all other powers enabling them in that behalf:–

**1.** The Council are authorised to construct over the navigable waters of Milton Creek (The Swale) the Bridge specified in the Schedule to this Scheme as part of the highway which they are proposing to construct from the roundabout joining Swale Way and Ridham Avenue, Kemsley, in a generally south easterly direction to the roundabout joining Castle Road and Swale Way, Sittingbourne, in the Borough of Swale in the County of Kent.

**2.** This Scheme may be cited as “The Kent County Council (Milton Creek Bridge) (No.2) Scheme 2007”.

Given under the common seal of the Council on the 20th day of December 2007.

The COMMON SEAL of the COUNCIL was hereunto affixed in the presence of:–

*M Rummins*  
Authorised Signatory

## THE SCHEDULE TO THE SCHEME

### Plans and Specifications of the Milton Creek Bridge

The location and general design of the Bridge are shown on the plans numbered 2947/OR/1 Revision A and 2947/OR/2 Revision A respectively, annexed hereto.

#### POINTS OF COMMENCEMENT AND TERMINATION

From a point on the west bank of Milton Creek at grid reference 591964 E 165219 N on Ordnance Survey Sheet TQ96, 360 metres north west of the roundabout joining Castle Road and Swale Way, Sittingbourne.

To a point on the east bank of Milton Creek at grid reference 592047 E 165162 N on Ordnance Survey Sheet TQ96, 260 metres north west of the roundabout joining Castle Road and Swale Way, Sittingbourne.

#### SPANS

An overall span of 100.65 metres comprising a main span of 39.95 metres and two approach spans of 30.35 metres each.

#### HEADWAY

A minimum headway of 4.2 metres above the Mean High Water Spring tide level (MHWS) of 2.8 metres AOD over a central navigation channel of 15 metres minimum width.

#### WATERWAY

A minimum clear navigable waterway of 34 metres.

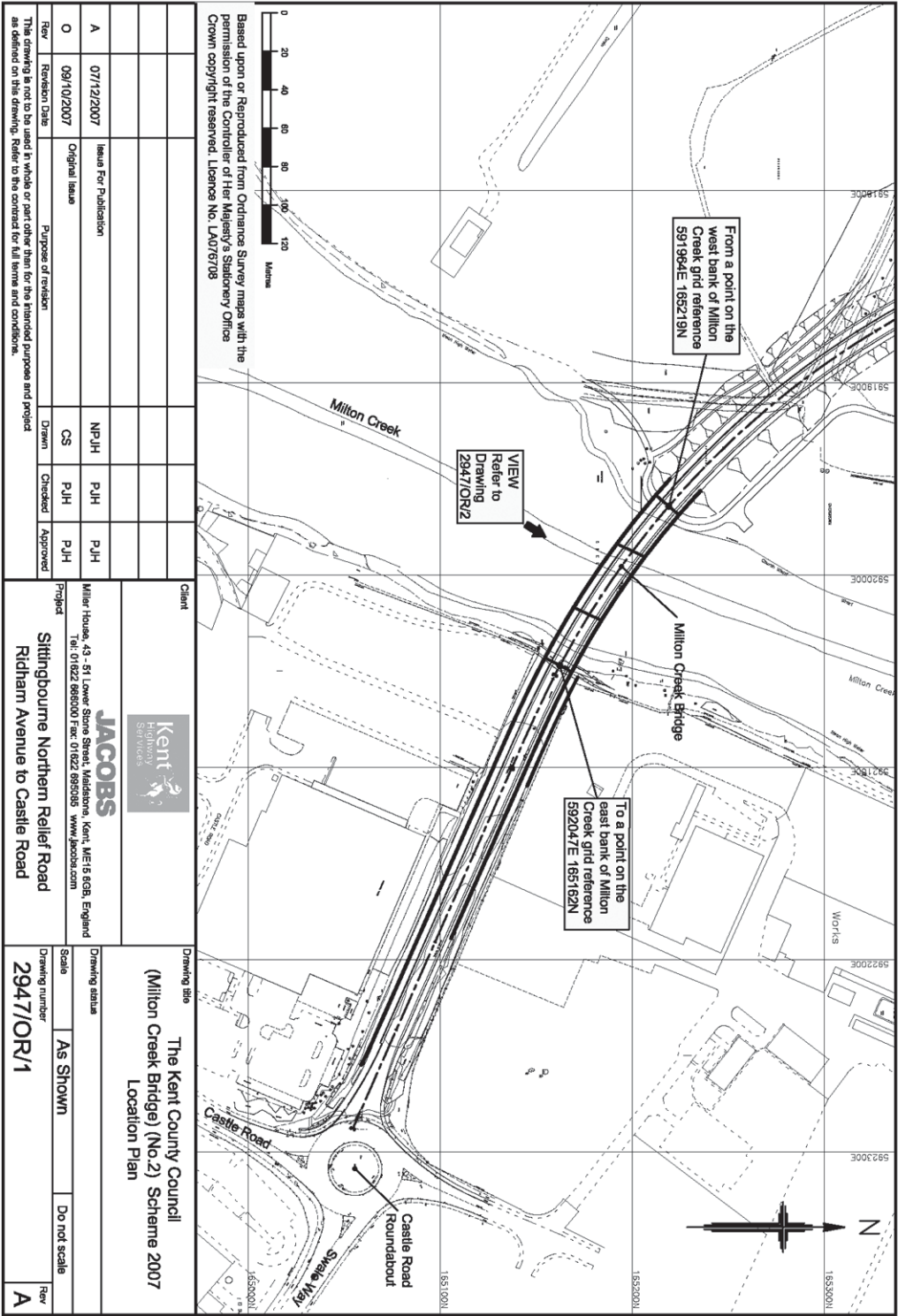
#### OVERALL DIMENSIONS

The bridge will be 16.3 metres wide and will carry a 7.3 metre wide single carriageway with a 1.0 metre wide hard strip on each side. There will be a 4.0 metre wide combined footway/cycleway on the southern side and a 2.0 metre wide paved verge on the northern side. There will be a 0.5 metre wide parapet plinth on each side. The bridge will have an overall length of 123.3 metres.

## **EXPLANATORY NOTE**

*(This note is not part of the Instrument)*

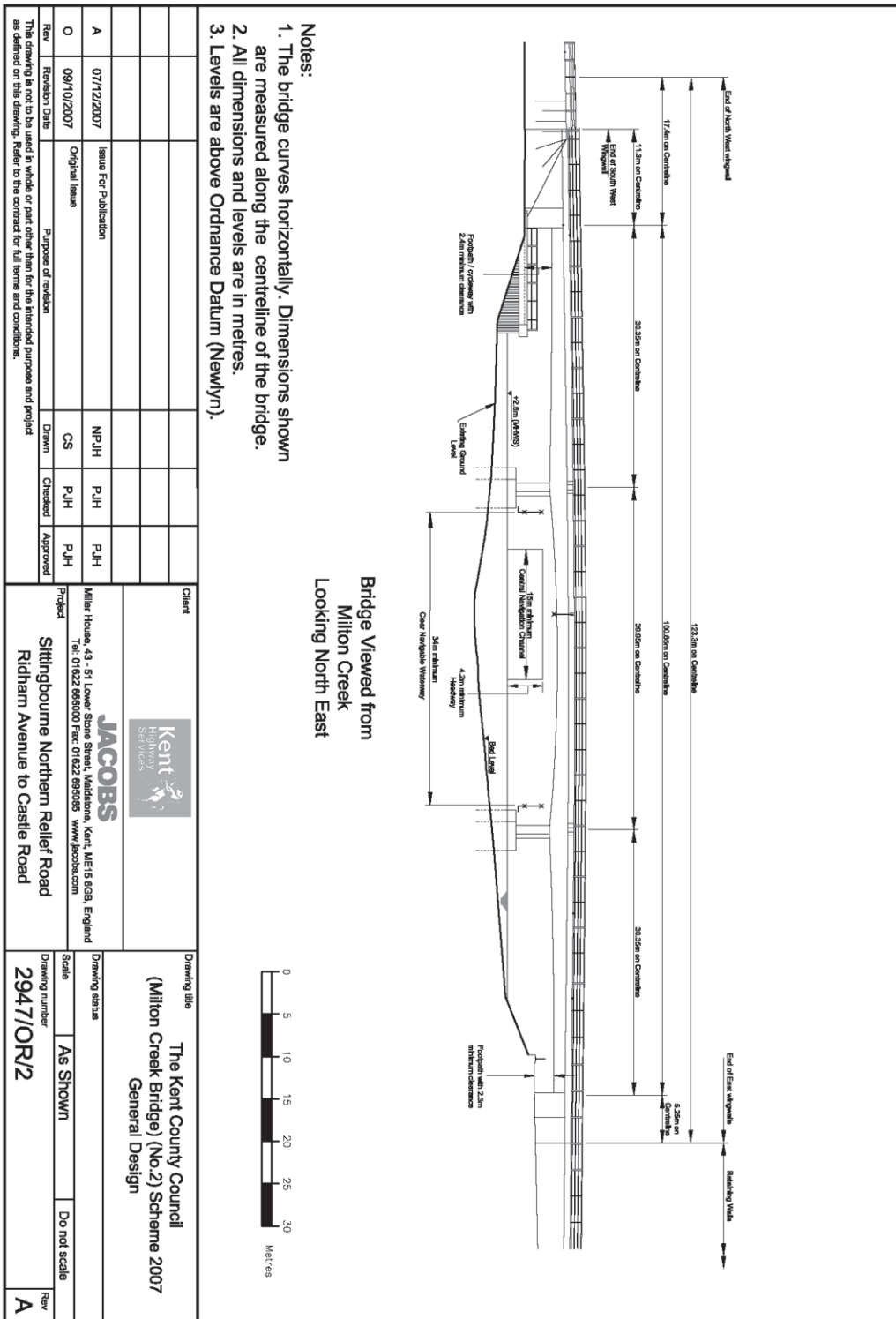
This Instrument confirms a Scheme to construct over the navigable waters of Milton Creek a bridge as part of the highway which is to be constructed from the roundabout joining Swale Way and Ridham Avenue, Kemsley to the roundabout joining Castle Road and Swale Way, Sittingbourne, in the Borough of Swale in the County of Kent.



Based upon or Reproduced from Ordnance Survey maps with the permission of the Controller of Her Majesty's Stationery Office. Crown copyright reserved. Licence No. LA076708

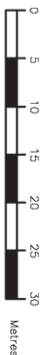
Client		 <b>JACOBS</b> Miller House, 43 - 51 Lower Stone Street, Maidstone, Kent, ME15 6GB, England Tel: 01622 865000 Fax: 01622 865086 www.jacobs.com	
Drawing title		The Kent County Council (Milton Creek Bridge) (No.2) Scheme 2007 Location Plan	
Drawing status		As Shown	
Scale		Do not scale	
Drawing number		2947/OR/1	
Rev		A	
Revision Date		09/10/2007	
Original Issue		Issue For Publication	
Purpose of revision		Original Issue	
Drawn		CS	
Checked		PJH	
Approved		PJH	
Rev		A	
Revision Date		07/12/2007	
Original Issue		Issue For Publication	
Purpose of revision		Original Issue	
Drawn		NPJH	
Checked		PJH	
Approved		PJH	

A4L



- Notes:
1. The bridge curves horizontally. Dimensions shown are measured along the centreline of the bridge.
  2. All dimensions and levels are in metres.
  3. Levels are above Ordnance Datum (Newlyn).

Bridge Viewed from  
Milton Creek  
Looking North East



		Client				Drawing title		<b>The Kent County Council</b> <b>(Milton Creek Bridge) (No.2) Scheme 2007</b> <b>General Design</b>	
		Project		<b>JACOBS</b> Miller House, 43 - 51 Lower Stone Street, Maidstone, Kent, ME15 6GB, England Tel: 01822 696000 Fax: 01822 696085 www.jacobs.com		Drawing status		<b>AS SHOWN</b>	
		Revision Date		Purpose of revision		Drawing		Checked / Approved	
A		07/12/2007		Issue For Publication		NPJH		PJH	
O		09/10/2007		Original Issue		CS		PJH	
Rev		Revision Date		Purpose of revision		Drawn		Checked / Approved	
This drawing is not to be used in whole or part other than for the intended purpose and project as defined on this drawing. Refer to the contract for full terms and conditions.									
		Project		<b>Sittingbourne Northern Relief Road</b> <b>Ridham Avenue to Castle Road</b>		Drawing number		<b>2947/OR/2</b>	
		Rev		Do not scale		Rev		<b>A</b>	

A4L

© Crown copyright 2009

Printed and published in the UK by The Stationery Office Limited under the authority and superintendence of Carol Tullo, Controller of Her Majesty's Stationery Office and Queen's Printer of Acts of Parliament.



**2008 No. 3298**

**HIGHWAYS, ENGLAND**

The Kent County Council (Milton Creek Bridge) (No. 2)  
Scheme 2007 Confirmation Instrument 2008

£5.00