
WELSH STATUTORY INSTRUMENTS

2003 No. 3132 (W.299)

LOCAL GOVERNMENT, WALES

**The Powys (Llanbadarn Fynydd,
Llanbister and Abbey Cwmhir) Order 2003**

Made - - - - 28th November 2003

Coming into force in accordance with Article 1(2)

The Local Government Boundary Commission for Wales having submitted to the National Assembly for Wales in accordance with sections 54(1) and 58(1) of the Local Government Act 1972⁽¹⁾ a report dated April 2002 on a review carried out by Powys County Council of the boundaries between the communities of Llanbadarn Fynydd, Llanbister and Abbey Cwmhir in the County of Powys together with the proposals they have formulated thereon;

and the National Assembly for Wales having decided to give effect to these proposals;

and more than six weeks having elapsed since those proposals were made;

now the National Assembly for Wales, in exercise of the powers given to the Secretary of State by section 58(2) of the Local Government Act 1972 which are vested in the National Assembly for Wales in so far as exercisable in Wales⁽²⁾ makes the following Order:

Name and commencement

1.—(1) This Order is called the Powys (Llanbadarn Fynydd, Llanbister and Abbey Cwmhir) Order 2003.

(2) This Order will come into force on 1 April 2004 which is the appointed day for the purposes of the Regulations, except that for the purposes set out in Regulation 4(1) of the Regulations this Order comes into force on 1 December 2003.

Interpretation

2. In this Order —

“boundary map A” (“*map ffiniau A*”) means the map prepared by the National Assembly for Wales and marked “Map A of the Powys (Llanbadarn Fynydd, Llanbister and Abbey Cwmhir) Order 2003” and deposited in accordance with Regulation 5 of the Regulations;

(1) 1972 (c. 70).

(2) See National Assembly for Wales (Transfer of Functions) Order 1999 (S.I. 1999/672).

Status: This is the original version (as it was originally made). This item of legislation is currently only available in its original format.

“boundary map B” (“*map ffiniau B*”) means the map prepared by the National Assembly for Wales and marked “Map B of the Powys (Llanbadarn Fynydd, Llanbister and Abbey Cwmhir) Order 2003” and deposited in accordance with Regulation 5 of the Regulations;

“Powys” (“*Powys*”) means the County of Powys; and

“the Regulations” (“*y Rheoliadau*”) means the Local Government Area Changes Regulations 1976(3).

Changes in Community Areas

3.—(1) The part of the community of Llanbister in Powys shown hatched in black on boundary map A is separated from that community and forms part of the community of Llanbadarn Fynydd in Powys.

(2) The part of Powys in the community of Abbey Cwmhir shown hatched in black on boundary map B is separated from that community and forms part of the community of Llanbadarn Fynydd in Powys.

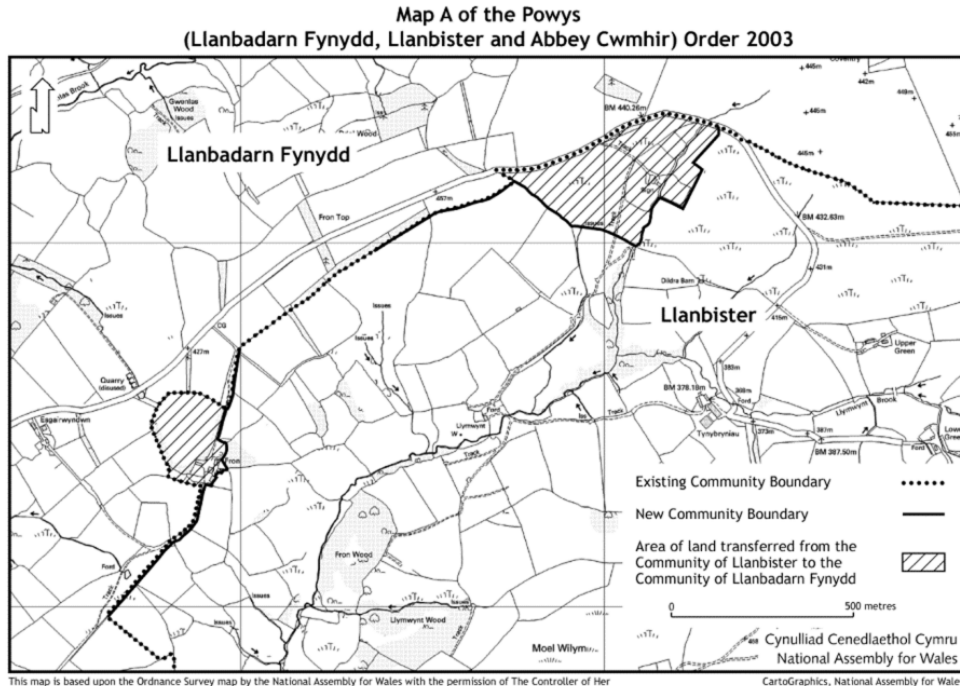
Signed on behalf of the National Assembly for Wales

28th November 2003

Sue Essex
Minister for Finance, Local Government and
Public Services

(3) [S.I. 1976/246](#) as amended by various statutory instruments which amendments are not relevant to this statutory instrument.

Status: This is the original version (as it was originally made). This item of legislation is currently only available in its original format.

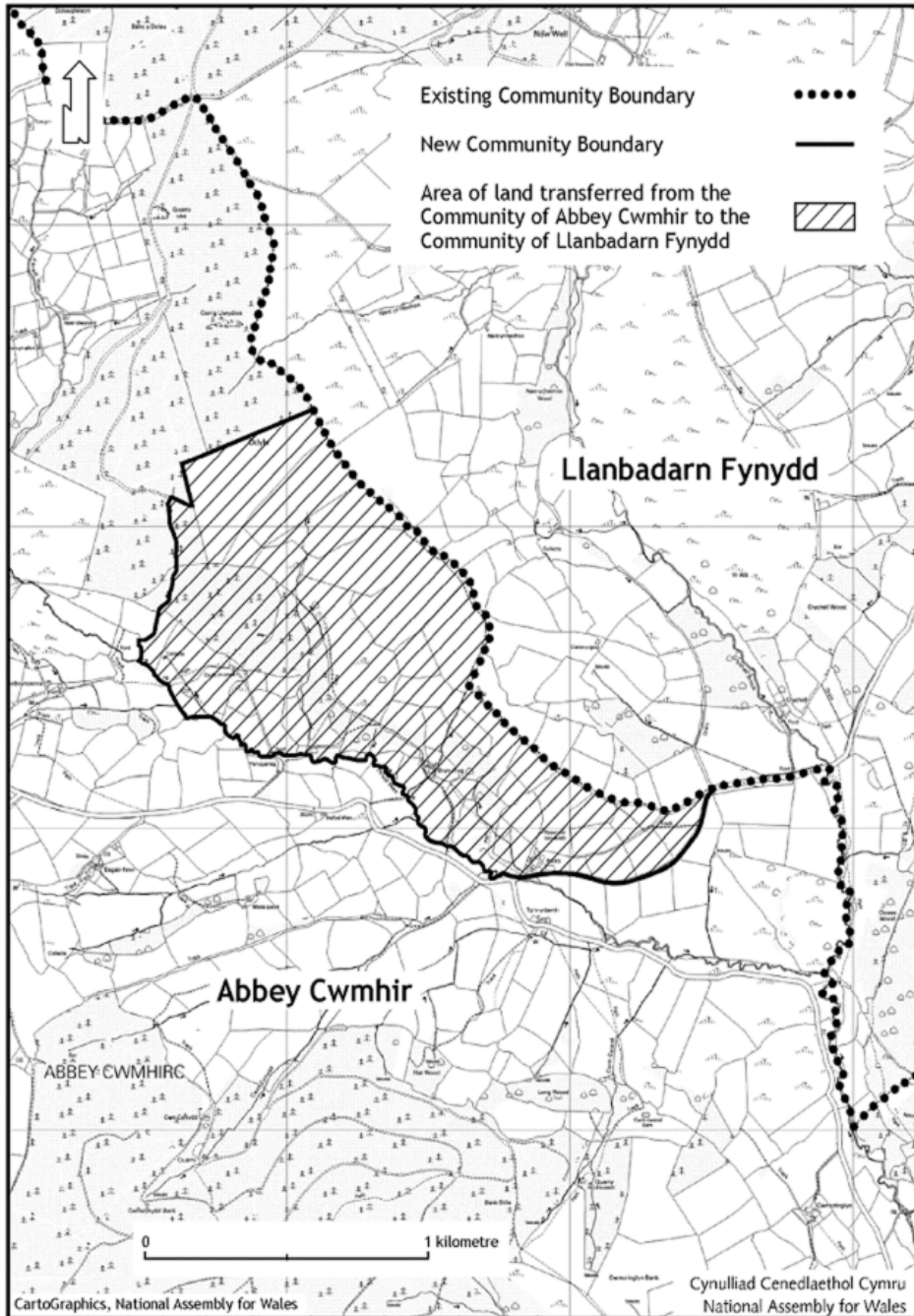


This map is based upon the Ordnance Survey map by the National Assembly for Wales with the permission of The Controller of Her Majesty's Stationery Office. © Crown copyright 2003. All rights reserved. Unauthorised reproduction infringes Crown copyright and may lead to prosecution or civil proceedings. Licence Number: GD 272221

CartoGraphics, National Assembly for Wales

Status: This is the original version (as it was originally made). This item of legislation is currently only available in its original format.

Map B of the Powys (Llanbadarn Fynydd, Llanbister and Abbey Cwmhir) Order 2003



This map is based upon the Ordnance Survey map by the National Assembly for Wales with the permission of The Controller of Her Majesty's Stationery Office. © Crown copyright 2003. All rights reserved. Unauthorised reproduction infringes Crown copyright and may lead to prosecution or civil proceedings. Licence Number: GD 272221

EXPLANATORY NOTE

(This note is not part of the Order)

This Order, made in accordance with section 58(2) of the Local Government Act 1972 gives effect to proposals by the Local Government Boundary Commission for Wales. The effect of those proposals is that:

- (i) those areas in the community of Llanbister in Powys in the vicinity of Fron and Sign (shown hatched in black on boundary map A referred to in Article 2 of this Order) will become part of the community of Llanbadarn Fynydd in Powys; and
- (ii) an area in the community of Abbey Cwmhir in Powys in the vicinity of Porth, Porth Bungalow, Brynrhug and Croft yr Onen (shown hatched in black on boundary map B referred to in Article 2 of this Order) will become part of the community of Llanbadarn Fynydd in Powys.

Prints of the boundary maps are deposited and may be inspected during normal office hours at the offices of Powys County Council at County Hall, Llandrindod Wells, Powys and at the offices of the National Assembly for Wales at Cathays Park, Cardiff (Local Government Modernisation Division).

The Local Government Area Changes Regulations 1976 (as amended) (“the 1976 Regulations”) referred to in Article 2 of this Order contain incidental, consequential, transitional and supplementary provisions about the effect and implementation of orders such as this.

By virtue of Regulation 40 of the 1976 Regulations, references in the County of Powys (Electoral Arrangements) Order 1998 to the communities of Llanbadarn Fynydd, Llanbister and Abbey Cwmhir will be construed as references to those communities as altered by this Order.